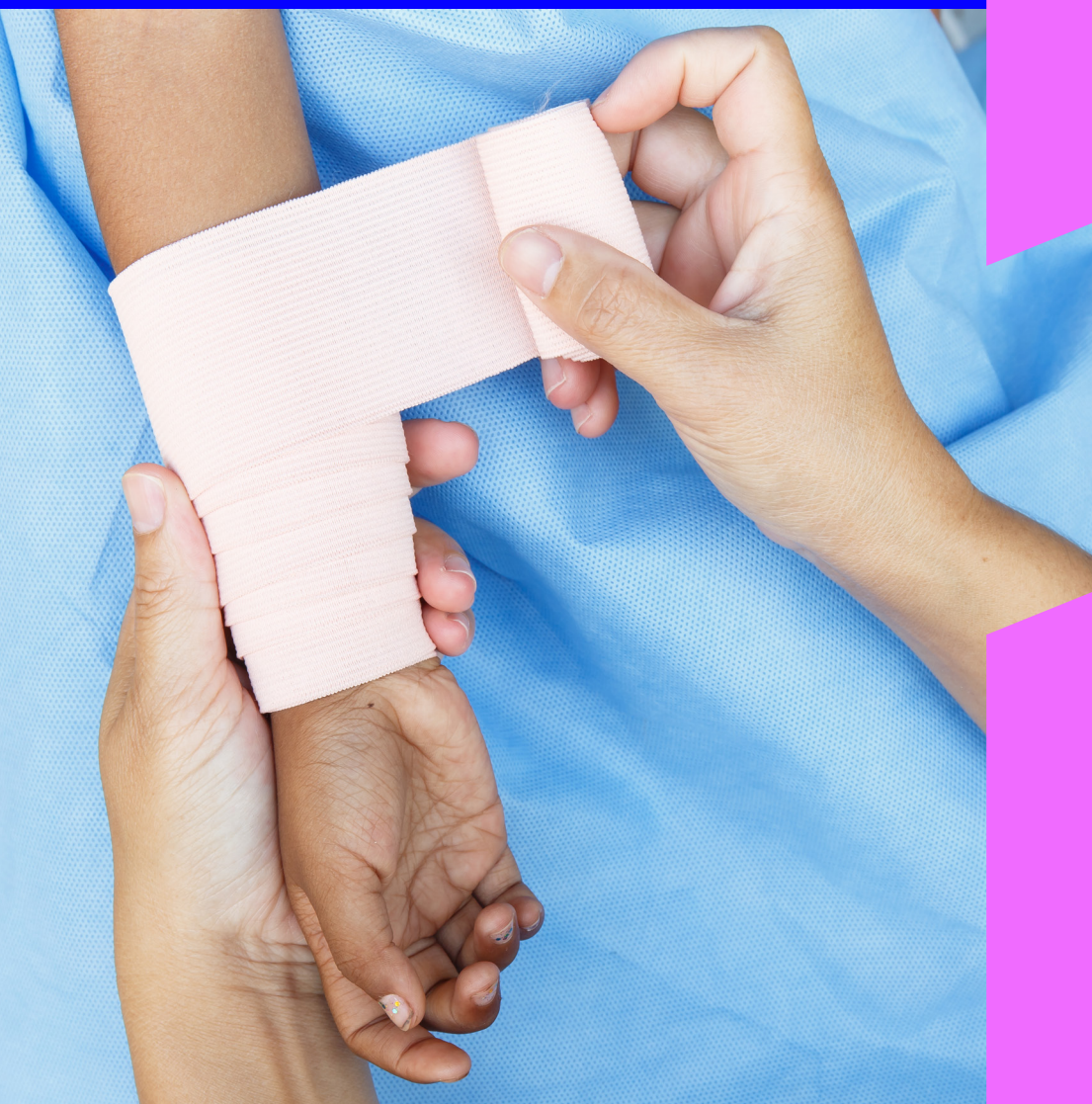


2025 Orientation Program

Welcome to 2nd Year
Nursing: Starting at Fed



Wednesday 18 June

Registration & check in	8.30–9 am	Room 101, Building 2E
Course overview - session 1	9–10 am	
Campus & library tour	10–11 am	
Course overview - session 2	11 am–12.30 pm	
Lunch (free food!)	12.30–1.30 pm	Student Lounge - Room 131, Building 3N
Getting connected We'll get you set up and logged into our online systems, so you're all ready when classes start. Bring your laptop to this session.	1.30–3 pm	Room 101, Building 2E

We can't wait to meet you

Orientation is compulsory because it gives you everything you need to start strong — from course information to meeting your lecturers.

There's no need to register, we will automatically send you reminders.

If you can't attend for any reason, you must let us know by calling us on 1800 333 864 or +61 3 5327 9018 (from outside Australia), Monday to Friday, 9 am–5 pm AEST.



Directions to campus

What to bring to Orientation

- 1 Student ID number
- 2 Laptop, notepad & pen
- 3 Bank card (we're cashless)
- 4 Smile and an open mind

► Find out more

Contact us



1800 333 864

Monday – Friday 9 am–5 pm

+61 3 5327 9018 (International students)



Live chat



Submit an online enquiry

Federation University Australia

1800 333 864

International: +613 5327 9018

Federation.edu.au

Ballarat PO Box 663 Ballarat VIC 3353 Australia

Berwick PO Box 859 Berwick VIC 3806 Australia

Gippsland PO Box 3191 Gippsland Mail Centre VIC 3841 Australia

Melbourne City 470 Bourke Street Melbourne VIC 3000 Australia

Wimmera PO Box 300 Horsham VIC 3402 Australia