



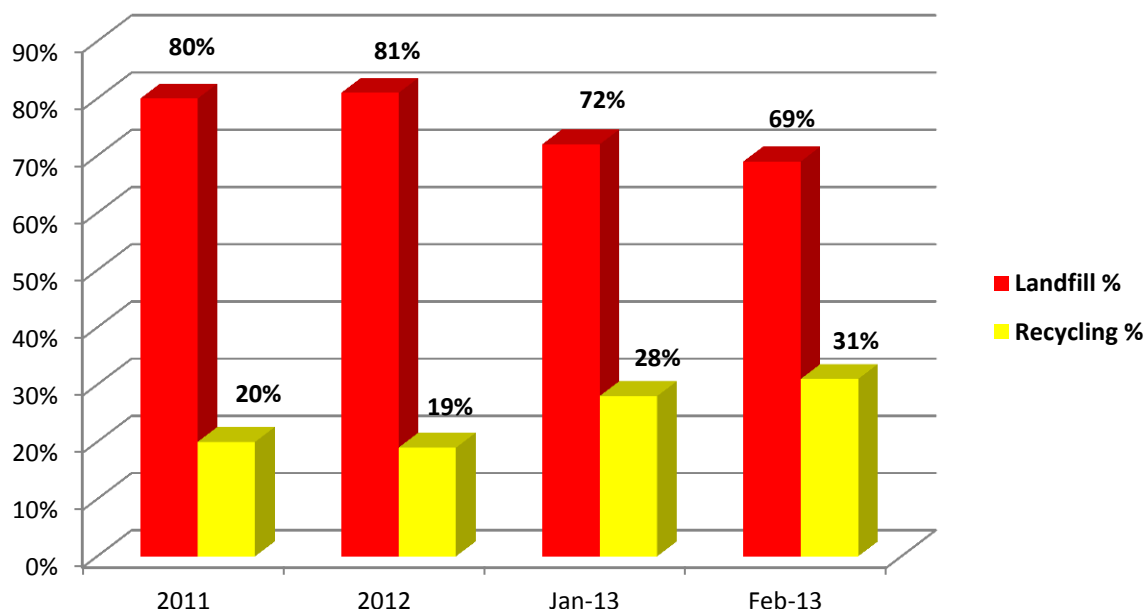
Switch off Over Easter

Could all staff please ensure that any non-essential electrical appliances are switched off during the Easter break. Every appliance turned off makes a difference to our electricity consumption.

Items include:

- lights
- computers
- photocopiers
- heaters
- kitchen appliances
- hot water boiling units.
-

New Waste Program – Update



Since the introduction of the new waste and recycling program, our waste to landfill has fallen and the amount of waste we're recycling has increased. Further improvements are expected as more building come online in 2013. The past two months have seen landfill waste fall by 10,000 kilograms.

Greener Government Buildings – LT & R Program

We're getting lots of queries on GGB funding available to promote sustainability in learning, teaching and research. We're now calling for Expressions of Interest. Four workshops will also be held in April to help applicants develop their EOIs.:

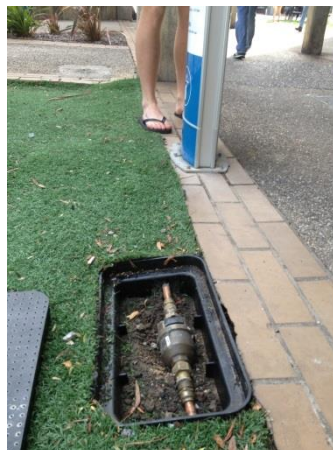
- Learning and Teaching Workshop: 10:30am – 12:00pm, 15th April, Room F312
- Research Workshop: 2:00pm-3:00pm, 15th April, Room F312
- Learning and Teaching Workshop: 1:00pm – 3:00pm, Tuesday 9th April, Room F315
- Research Workshop: 3:00pm – 5:00pm, Tuesday 9th April, Room F315

Free E-waste program for Staff and Students

Do you have ewaste at home? UB will offer a free ewaste program for staff and students at Mt Helen campus on Monday 22 April. This one off program is an opportunity to safely dispose of unwanted electronic waste from home. Further information on will be distributed in the coming days.

Water Filter Stations

Water meters have been installed on the filtered water stations at Mt Helen campus. We can now track the consumption of the stations throughout the year. Initial analysis shows the students are consuming around 150 - 200 litres per day.



Changes to Bike Parking Access

We're in the process of changing access to the bike parking facility so students have automatic access via their student ID card. Currently It's a timely process that takes 2-3 days to grant students access. We're hoping this change will encourage more students to ride and reduce administrative time.

Changes to Bus Fares

From the 12 April, 2 hour passes and day passes will no longer be offered in Ballarat and you'll need a myki card to travel on Davis Buslines. This now aligns Ballarat with the Melbourne Met system and is also preparing for myki to be on the V/line trains later this year.

Ballarat Transport Connections Forum

UB representatives attended the Ballarat Transport Connections Forum on the 7 March hosted by the City of Ballarat. The objectives of the Ballarat Transport Connection Forum 2013 were:

- To encourage people to look broadly at transport issues through a wide range of issues
- To encourage transport connection initiatives that address both 'hard' and 'soft' infrastructure
- To provide a reporting back mechanism to DPCD regarding Transport Connection achievements in Ballarat

Recommendations from the forum are attached.