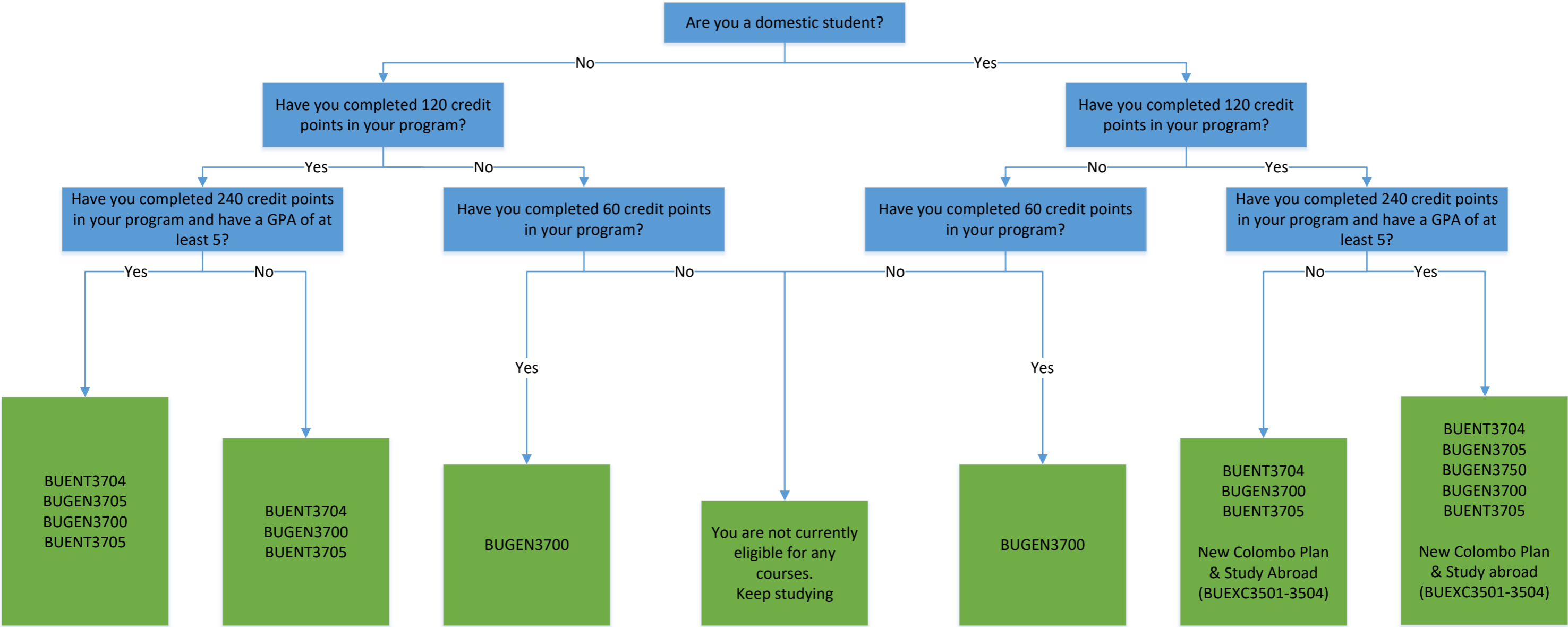


# Which Work Integrated Learning courses are you eligible for?



Applications are required for BUENT3704, BUGEN3705, BUGEN3750, and New Colombo Plan; eligibility for these courses does not guarantee a successful application.  
**For further information about Work Integrated Learning (WIL), please contact the WIL team on [business.wil@federation.edu.au](mailto:business.wil@federation.edu.au)**