

Fed **Connect** and **Care** Series

Free for all students

The Fed Connect and Care series brings together the best of our support and services to connect you to the Fed community and support your Fed journey.

Employability Coaching Program

Federation University is implementing the Employability Coaching Program to support job hunting students to secure opportunities for the summer and new year.

Are you:

- Searching for casual, part-time, or full-time work?
- Interested in applying for internships or graduate roles?
- Finding your job hunting and motivation has been impacted by COVID-19
- Looking for expert advice to assist with resume, interviews, LinkedIn profile, and career planning?

Through a series of **resources and activities** – and **your own Employability Coach** – the Careers and Employability team will prepare you for employment.



You will have free access to:

- One-on-one employment coaching.
- Job hunting and career planning resources.
- Current job vacancies available to students.
- Expert advice on identifying your strengths and building your employability skills.

Find out more about the **Employability Coaching Program**

The Employability Coaching Program complements and adds to our range of student support services.



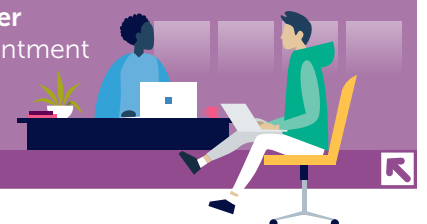
Our employability experts are excited to work with you to **achieve your job search and career goals.**

Edge is your **one-stop-shop** for events, booking **appointments** with Learning Skills Advisors and Career Advisors, uploading **resumes** and applying for casual, part-time and graduate **employment** opportunities.

[Click here](#)

Stand out and get ahead in your career

For **one-on-one career advice** make an appointment with the **Careers and Employability** team



[Click here](#)