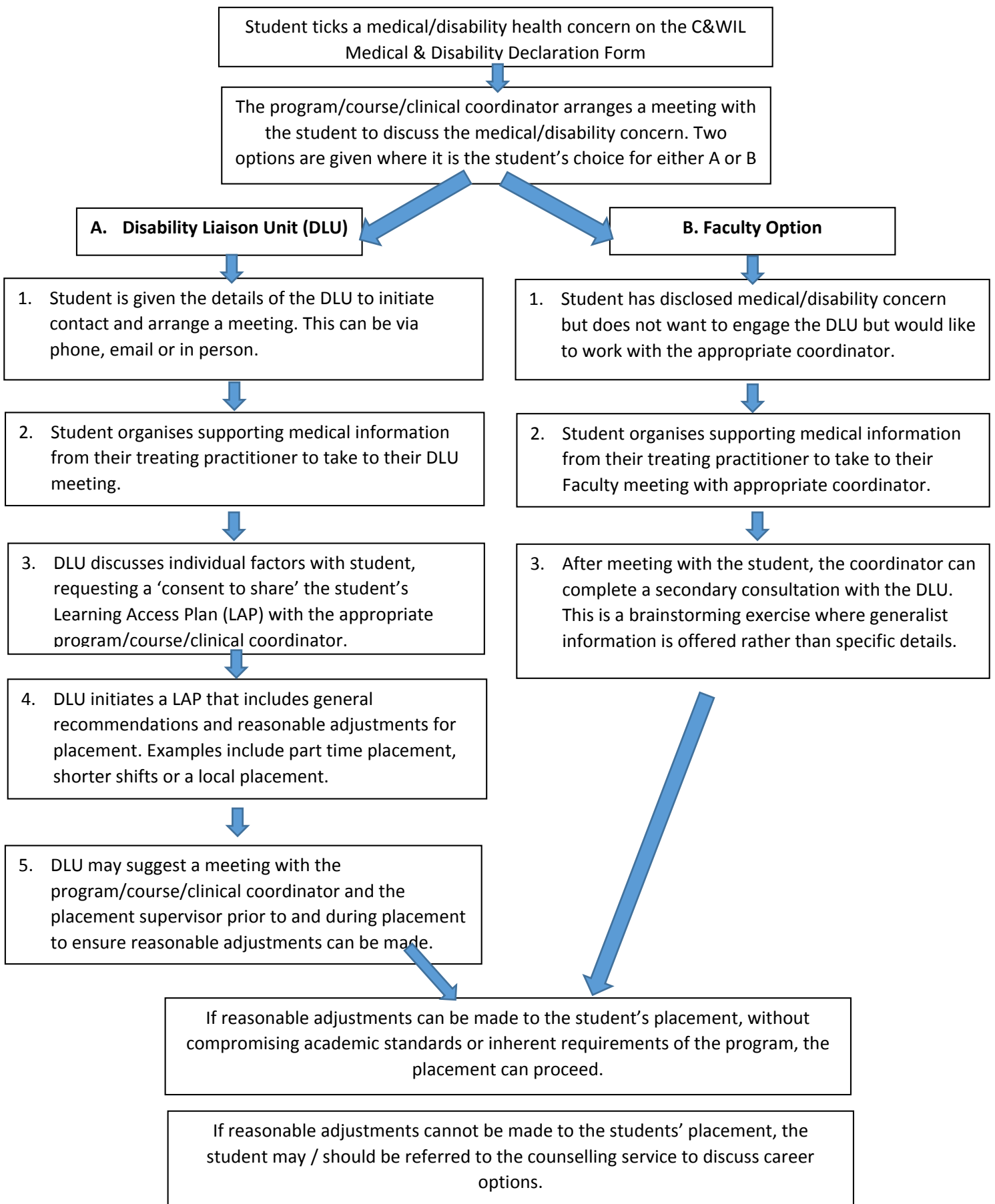


Clinical and Work Integrated Learning Student Medical & Disability Flow Chart



Disability Liaison Unit Background Information (adapted from FedUni Website, 2015)

The role of the Disability Liaison Unit (DLU) is to support the development of a learning and working environment that maximises participation in University life by students with a disability. This includes a student being able to actively and safely participate in clinical and workplace learning placements.

The DLU employs Disability Liaison Officers (DLO) whose role it is to:

- Negotiate tailored services to meet the individual needs of the student
- Ensure that the academic standards and inherent requirements of a program or course are not compromised

The following dot points contain generic information regarding the DLU:

- The DLU work with 'impact words/statements' in conjunction with an external, professional diagnostic information.
- The DLU provide reasonable adjustments and the University should not implement unreasonable adjustments that would adversely affect the academic standards or inherent requirements of the program of study, or where a request would cause 'unjustifiable hardship.'
- It is the student's choice to engage with the DLU.