

Quarterly Newsletter - December 2024



In this newsletter:

- [Message from the Director](#)
- [CERC Announcements](#)
- [Celebrating CERC staff and members](#)
- [Recent CERC Grants awarded](#)
- [Current Projects](#)
- [Completed Projects](#)
- [CERC Staff and Member Publication Updates](#)

Message from the Director

Dear External Partners and CERC members,

On behalf of the CERC team, we would like to wish all our partners, members and the communities that we serve, a very Merry Christmas and a safe and happy New Year. It's been another rewarding year working collaboratively on a number of key projects and 2025 is already shaping up to be another amazing year ahead helping to showcase all the amazing work of our partner organisations. I look forward to continuing all the great work with you all next year.

For a media release about supporting innovative research and evaluation, click the link: [Supporting innovative research and evaluation - Federation University Australia](#)

Professor Joanne Porter leads a multidisciplinary team of researchers and evaluators, working on projects with industry partners, government departments, agencies and community groups to shift thinking in evaluation research by empowering communities to grow through evidence-based innovation.



Professor Joanne Porter

Images not loading? [Download a copy of our newsletter from our website](#)

CERC Announcements

Launch of the Migrant Recruitment and Retention Charter in Warragul

On 29 November 2024, the Gippsland Regional Partnerships officially launched the Migrant Recruitment and Retention Charter (the Charter) developed by the Collaborative Evaluation and Research Centre (CERC). This event was held at Daizies Function Centre in Warragul, Gippsland with approximately 35 participants from state and local governments, the community and settlement support sector, business owners, and migrants.

The Charter was developed based on the research findings, engaging with 123 participants who were migrants, stakeholders working with migrants, and business owners. The Charter lays out six values: *Inclusion, Welcoming, Awareness, Support, Orientation* and *Opportunities*. These values are underpinned by six guiding principles as follows:

1. Develop and maintain a positive mindset toward people from migrant backgrounds.

2. Promote inclusivity/social cohesion and awareness of diverse communities.
3. Reduce language barriers for people from migrant backgrounds.
4. Develop opportunities for broader community networking and connection.
5. Elevate and build upon good practices.
6. Incentivise migrants to settle in regional areas.

This Charter can be accessed via <https://doi.org/10.35843/GMRRCCERC24> and the project report is available at <https://doi.org/10.35843/DNSGMS24>.



Professor Joanna Porter (far left) and Dr Sambath My (far right) with attendees at the launch event

Professional Development Sessions 2024

CERC has offered many professional development online sessions during the past several months. Many of these sessions have been recorded. If you have not been able to attend any of the sessions below and would like to view the recording, please contact the team via the CERC email address - cerc@federation.edu.au.

- Introduction to Covidence
- Grant Budget and Funding Forms
- Quantitative Report Writing
- Ethical participant recruitment, IP and sharing data
- Infographics - CANVA - info session
- Mentimeter workshop
- Virtual Reality and Pain
- Research Integrity Presentation
- Developing International Research Collaboration
- Publishing with Open Access

Seed Grants

In June each year, CERC aims to provide members with an opportunity to apply for a Seed Grant to the value of \$5000. The purpose of the Seed Grant is to stimulate research projects that may enhance early-career researcher's portfolios, benefit communities we work with and meet the values of CERC. The Seed Grants are aimed at early-career researchers. Funds can be used for open-access publication, dissemination, research assistance, data collection and analysis, or the purchase of research-related equipment.

In 2024, the Seed Grants were awarded to

- *Dr Riki Lindsey & Dr Dominic McNeil*

Title: A qualitative exploration of risk and protective factors for mental health in local level AFL umpires

- *Dr Emma Siesmaa, Dr Ryan Worn, Megan Hekkema, Dr Meghan Casey & Dr Daria Soldatenko*

Title: Injury occurrence and perceptions among recreational mountain bike park users: What are the implications for park operators?

- *Jacob Dye, Megan Youngson, Megan Jenkins, Dixie Statham, George Van Doorn, Nanette Gerlach, Gabriel Tillman, Erin Harcourt*

Title: The efficacy of psychological interventions for the psychological impacts of Post Intensive Care Syndrome (PICS); A systematic review

- *Dr K. Hood, Professor Michael Olasoji, Trent Kooyman, Angela Gaylard, Hayley Morgan*

Title: Interprofessional Student Team Placements: Collaborating for person-centred care for people living with homelessness: A Pilot Project.

Seed Grants 2025

Applications for the Seed Grants 2025 will open in March 2025. Stay tuned for further announcements on our website, in the newsletter, and via email from CERC.

Staff Updates

Maternity leave

- *Megan Simic*

We are delighted to share that Megan Simic, our Deputy Director - Operations, welcomed her son in August 2024. Megan is currently on maternity leave until February 2025. For any correspondence intended for Megan during her leave, please send it to the CERC email: cerc@federation.edu.au.

We extend our warmest congratulations to Megan and her family!

Farewells

- *Dr Libby Miller*

It is with great sadness that we say goodbye to Libby who has left the Centre to undertake new career opportunities.

Libby joined the CERC team in 2022 as a Research Fellow.

Libby completed a Bachelor of Nursing in 2017 with high distinctions and received the University Medal for outstanding achievement. During that year, she participated in a hospital nursing placement in Nepal, igniting a passion to explore carer roles and the hospital environment for people with palliative and end-of-life needs through an honours research project in 2018.

Libby's love for research continued, and she commenced a full-time PhD in March 2020. Libby's PhD investigated environmental factors within the acute hospital setting - the natural, built, social (behaviour and language), and symbolic environments where people may receive bad news about their life-limiting illness. As well as research expertise, Libby has medical, palliative, surgical and hospital-in-the-home clinical experience.

Following her passion for teaching, Dr Libby accepted a position at Flinders University teaching the Palliative Care degree in August 2024.

Libby will be greatly missed, we wish her happiness and good luck on the next stage of her career!

Celebrating CERC staff and members

HDR news/success

Successful Confirmation of Candidature (CoC)

Megan Hekkema

- **Project title:** Development of a Sport Management Competency Assessment Tool.

PhD Examination Success

Megan Simic

- **Project title:** The Lived Experiences of Emergency Department Nurses During the COVID-19 pandemic.

Maryam Ghasemi

- **Project title:** A Case Study to Evaluate the Effectiveness of Chronic Disease Management Plan on Self-Management among Patients with Diabetes Mellitus at General Practice Settings.

Samira Hamadeh

- **Project title:** Pain Management for Sedated and Ventilated Patients in Australian Intensive Care Settings: Current Situation and Ways to Optimise Intervention Implementation.

Hayley Scott

- **Project title:** Development and evaluation of a driving clinical decision pathway for non-driver trained occupational therapists guide return-to-driving practices for adults following a change-in-health status.

CERC congratulates previous HDR students on their wonderful achievements!

2024 Promotions

CERC extends its congratulations on this year's well-deserved promotions:

Dr Nicole Coombs

- promoted to Senior Lecturer

Dr Amany Abdelkader

- promoted to Senior lecturer

Dr Carolyn Bailey

- promoted to Associate Professor

Conference acceptance and presentations

Dr Sambath My

- gave a one-hour guest lecture on 'Caring masculinities in Cambodia' to Master of Development Studies Students at the University of Melbourne. This guest lecture was part of the 'Gender Analysis in Development Practice' subject.



Photo: Gender and Development for Cambodia

Guest Lecture:
Caring Masculinities in Cambodia
for
Master of Development Studies
Students at Melbourne University

03 September 2024

Dr Sambath My, Research Fellow



Collaborative Evaluation &
Research Centre (CERC)

Presentation by Dr Sambath My

Natalie Bransgrove

- presented at the Western Alliance Symposium, Lorne, Australia.

Kerry de Vent

- presented at the Western Alliance Symposium, Lorne, Australia.



Natalie Bransgrove and Kerry de Vent at the Western Alliance Symposium

Sam Fenton

- presented two oral presentations at the National Outdoor Education Conference (NOEC), Federation University, Gippsland campus, Australia.

Dr Daria Soldatenko

- presented at the National Outdoor Education Conference (NOEC), Federation University, Gippsland campus, Australia.



Dr Daria Soldatenko and Sam Fenton at the National Outdoor Education Conference



Presentation by Dr Daria Soldatenko and Sam Fenton

At the National Outdoor Education Conference, Dr Daria Soldatenko and Sam Fenton presented the findings of the evaluation project completed in 2024. The project used a community-led study approach, and captured views on local tourism, along with stakeholder and expert views on how to improve the visitor economy, while preserving or enhancing the local culture and the liveability of Heyfield and District. The report can be found here: [Strategic Planning Report for the Tourism Innovation Working Group: Heyfield & District, 2024](#)

Recent CERC Grants awarded

Porter, J.E., Hualda, L., Soldatenko, D., My, S., Weerasekara, I. Offshore wind energy workforce preparation study. TAFE Gippsland.

Porter, J.E., Soldatenko, D., Hualda, L., Simic., M., My. S., Coombs, N. Walhalla Goldfields Railway Evaluation. Department of Jobs, Skills, Industry and Regions.

Current Projects

Creating Inclusive Work Environments through Leadership and Management Innovations

The Collaborative Evaluation & Research Centre (CERC) in partnership with the [Victorian Skills Authority \(VIC\)](#) and [Federation TAFE](#) aims to create inclusive work environments in the construction and manufacturing sectors by introducing leadership and management innovations. The output of this project is expected to contribute to addressing challenges in these sectors related to attraction, retention, and completion of apprenticeships.

The leadership and management innovations will be developed through a co-design process with stakeholders of the construction and manufacturing sectors, registered training organisations, employees and their associations, and the government. The innovations will be a package of leadership and management learning materials that will be delivered in formal learning settings.



Walhalla Goldfields Railway Evaluation

The [Walhalla Goldfields Railway \(WGR\)](#) is partnering with the Collaborative Evaluation and Research Centre (CERC) at Federation University, under the guidance of a governance project control group to conduct the body of work.

The project will include understanding tourism market demands, determining infrastructure and service requirements to meet demands, financial feasibility assessment of reconstruction and upgrading of facilities and services, and designing marketing strategies to improve tourist visitations. Stakeholder involvement will be integral throughout the project to ensure its success.

The WGR is envisioned as a cornerstone of the tourism offerings in the Shire of Baw Baw and the City of Latrobe, playing a pivotal role in a broader regional tourism campaign that showcases local attractions and services.



Our Equal Local Government: A Project for Preventing Gendered Violence and Sexual Harassment (in Local Government)

The Collaborative Evaluation & Research Centre (CERC), in partnership with [Gippsland Women's Health \(GWH\)](#), aims to strengthen and support Local Governments to reduce work-related gendered violence, including sexual harassment (WRGV-SH). Specifically, this project aims to understand how workplace training on work-related gendered violence, including sexual harassment, can increase the knowledge and understanding of Local Government Area (LGA) staff members and promote system change in local governments in Gippsland.

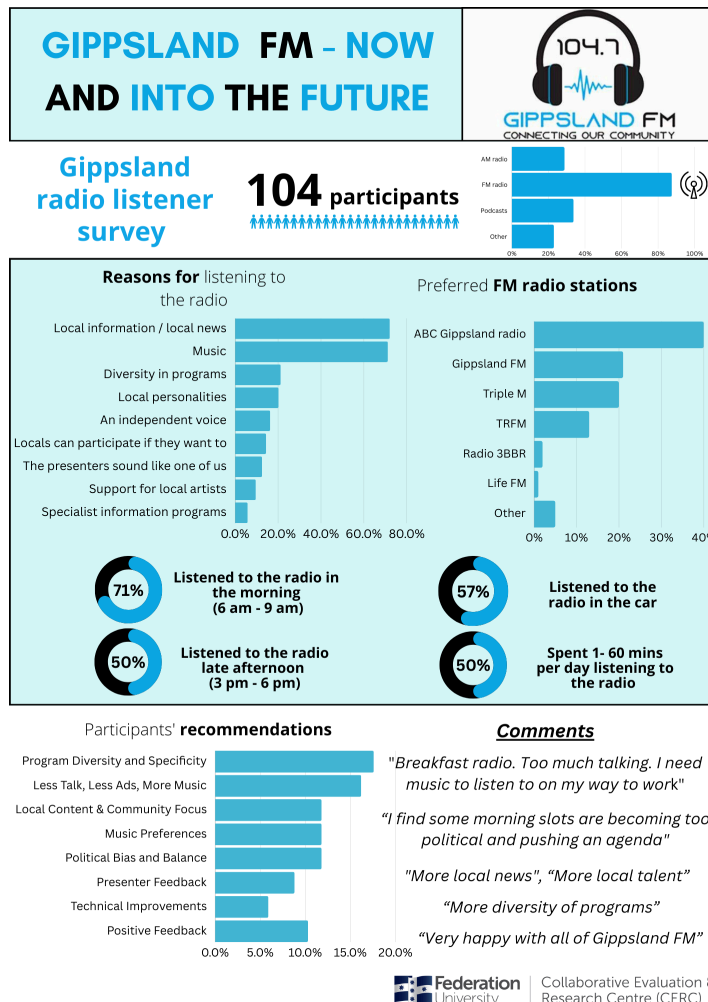


Completed Projects

Gippsland Radio - Now and into the Future Project

The Collaborative Evaluation & Research Centre (CERC) conducted a study to gather insights from Gippsland radio listeners. This project determined the preferences of listeners in the local community to make radio stations more responsive to local needs. The findings provided information that can allow radio stations to develop strategies to stay relevant and sustainable.

A final report for this project will be available on the CERC website soon.



Project infographic

Evaluation of the Youth-led Gippsland Bushfire Recovery Project

CERC, working in partnership with [Latrobe Youth Space](#), evaluated the impact of a place-based initiative bringing physical activity to rural and remote communities in East Gippsland and Wellington Shire. The Project provided programs, activities, and services to young people aged 12 to 25 in various towns, using a community-building model that supports and empowers them to find their voice.

A final report for this project will be available on the CERC website soon.



CERC Staff and Member Publication Updates

CERC Publications:

CERC has recently had a number of papers published in a range of academic journals:

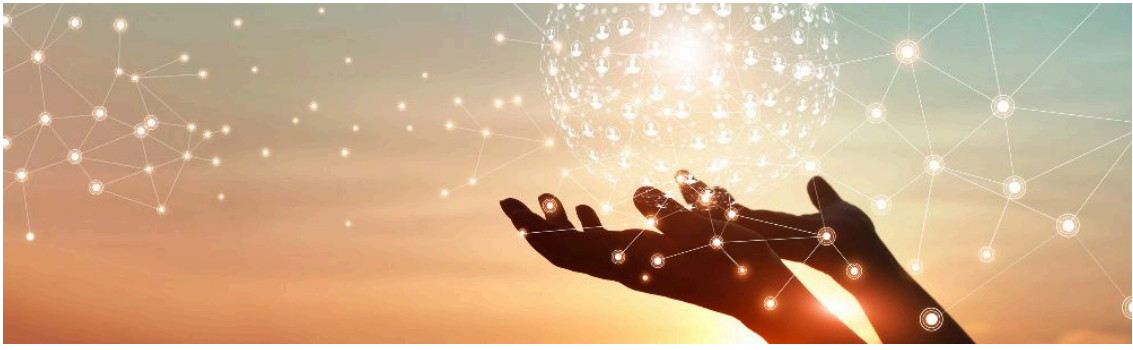
Porter J, Coombs N, Barbagallo M. (2024). Student led community health checks in regional Victoria: A mixed methods study. *Health Promotion Journal of Australia*. <https://doi.org/10.1002/hpja.909>

Porter J.E., Miller, E.M., Prokopiv, V., Sewell, L., Borgelt, K., & Reimers, V. (2024) Providing a localised cervical cancer screening course for general practice nurses. *Australian Journal of Primary Health*, 30. doi:10.1071/PY24089

Bransgrove, N. Porter, J.E. Peck, B. Bishop, J. (2024). Mapping Hospital in the Home Models of Care: A systematic review. *Journal of Advanced Nursing*. <https://doi.org/10.1111/jan.16639>

Porter J.E., Soldatenko D., Simic M.R., Miller E.M., **Hualda L.A.T.** (2024). Nature-based Community Recovery post-natural disaster: Black Summer bushfires. *Disaster Medicine and Public Health Preparedness*. In print.

View our Publications



Become a CERC member

About us

The Collaborative Evaluation & Research Centre (CERC) works in partnership to build evaluation capacity, research and expertise. CERC understands the value of listening to the community and has the ability to deliver timely, rigorous and sustainable evaluations tailored to the needs of a wide variety of organisations. CERC provides training, workshops and mentoring to build capacity to enable organisations to conduct meaningful evaluations.

Visit our website

Contact us:

Email: cerc@federation.edu.au

Phone: +61 03 5122 6508

Our mailing address is:

Collaborative Evaluation & Research Centre

Federation University, Gippsland Campus

PO Box 3191

Gippsland Mail Centre VIC 3841

CRICOS Provider No. 00103D | RTO Code 4909

Want to change how you receive these emails?

You can update your preferences or unsubscribe from this list.

Federation University Australia acknowledges the Traditional Custodians of the lands and waters where its campuses are located, and we pay our respects to Elders past and present, and extend our respect to all Aboriginal and Torres Strait Islander and First Nations Peoples.

This message and its contents are confidential. If you received this message in error, do not use or rely upon it. Instead, please inform the sender and delete it.