



Global Professional School

2024 Partner Conference

COLLABORATIVE HORIZONS

Elevating student experiences through dynamic partnerships

Thursday 1 and Friday 2 February 2024

Federation University Australia
SMB Campus, Ballarat

Contents

Acknowledgement of Country	3
Welcome from the Dean	4
Useful information	5
Be in time for...	6
People's Choice Award	7
Your feedback matters	8
Maps	9-11
Timetable	12-13
In detail - Plenary sessions and events	14-18
In detail - Concurrent sessions	19-25
2024 Partner Conference Committees	26
Conference sponsors	27

Acknowledgement of Country

We would like to acknowledge the Traditional Custodians of the land on which this event is taking place, the Wadawurrung people and pay our respect to Elders, past and present.

Supporting local Aboriginal artists

This year, we aimed to forge new connections with local First Nations community. In doing so, we gained support from an accomplished indigenous artist Jenna Oldaker who generously contributed her image for our use during the conference.

She is a Wadawurrung Traditional Owner and Visual Artist creating works under 'Murrup Art'. 'Murrup' is the Wadawurrung word for spirit, which is fitting as Jenna's art comes from her ancestors and their spirits.

Through her art, Jenna expresses her deep connection and love for her Aboriginal culture, country, and heritage. Every piece created by Jenna comes from her heart and strong connection to Wadawurrung culture. Her passion is to create each work with its own individual story and meaning, and

also to educate others about Wadawurrung culture and country.

Born and based in Ballarat on Wadawurrung Country, Jenna uses mostly bright, contemporary colours to create unique and detailed artworks. Her vibrant, multi-coloured artworks are largely inspired by the traditional marks and symbols from the dreamtime and also from Wadawurrung Country itself.

Working primarily with acrylic paints on canvas, Jenna enjoys creating new pieces using a variety of forms and dimensions.

You will have the chance to view Jenna's artwork during the conference.



 @murrup_art

Welcome from the Dean

On behalf of Federation University I would like to warmly welcome you to the 2024 Partner Conference.

It is an important and interactive event providing professional development and networking opportunities for academic and professional staff, from both Federation University and partner institutions.

This year's theme is *Collaborative Horizons – Elevating student experiences through dynamic partnerships*. We offer a range of presentations focusing on best practice, research outcomes, initiatives that made a difference as well as some of the university's priority projects: Co-operative Model and Learner Experience Transformation.

Over the two days, you will have the opportunity to actively participate - either through sharing ideas, collaborative sessions, or networking with your peers.

I would like to thank all the presenters from Federation University and our partner institutions for contributing to this year's conference. Your contributions are pivotal to the event's success. I also extend my thanks to all our keynote speakers, panellists, and a number of students who generously contributed with their time.



My thanks go also to our sponsors, Visit Ballarat, Central Highlands Water, Mars Wrigley and Ferndale Confectionery, for their support and generous contributions to the conference.

Finally, I would like to thank our attendees! Without you this event would not be possible and we appreciate the time you have taken to attend.

I trust that you will all enjoy this year's Partner Conference and leave with fresh ideas and inspiration for enhancing the success of our partner courses and collaborative opportunities.

Associate Professor Jason Giri
Dean, Global Professional School

Useful information

Event location

Buildings A and T, SMB Campus, Lydiard Street South, Ballarat.

More information and a virtual tour of this campus can be found at: <https://federation.edu.au/about-us/our-campuses/ballarat/smb-campus>

A detailed map of the campus is included in the **Maps** section or you can [download it](#).

Parking

Free and paid parking options are available in the vicinity of the SMB Campus. The free parking options are highlighted in the **Maps** section.

Wi-Fi access

Free Wi-Fi is available at the SMB campus via the following two accounts:

- FedUni Guest Wi-fi
- FedUni Conferences

Delegates with a Federation username and password can also use the [Eduroam wi-fi](#).

[https://federation.edu.au/library/external-borrowers/patrons-from-other-universities-and-
tafes/eduroam-wireless-access](https://federation.edu.au/library/external-borrowers/patrons-from-other-universities-and-tafes/eduroam-wireless-access)

Mobile phones - do not disturb guidelines

As a courtesy to other delegates and our presenters, please ensure that mobile phones are switched off or on silent mode during all sessions.

Photographs, videos and recording of sessions

Delegates are not permitted to use any form of camera or recording media at any of the presentations unless prior written permission has been obtained from the relevant speaker.

Sessions will be recorded by Federation and made available later. Microphones used for recording of the concurrent sessions are very sensitive and therefore we kindly ask you to refrain from making any incidental noise during the sessions.

Photographers will be active throughout the conference. Resulting photos may be used for marketing and media publication in the future. If you do not wish to have your photo taken and/or published, please advise the registration desk and our friendly photographers if they approach you for a photo.

Smoke free

Federation University is a smoke free organisation and smoking is not permitted on any University premises or grounds.

Meeting room facilities and break out spaces

Our conference venue has spaces available for meetings with Federation staff. If partners are wanting to use any of these spaces, they need to book via the registration desk for the conference.

Additionally, building A has some great break out spaces for delegates can use. We have marked these on the building diagrams for your reference in the **Maps** section.

Be in time for...

Partner Conference Dinner

**Thursday 1st of February, 6pm
Prospects Restaurant, SMB Campus**

Enjoy dinner with your fellow delegates, listen to the Vice-Chancellor deliver a keynote address and enjoy a 2-course meal in our fully licensed restaurant.

This restaurant is usually used to give our Commercial Cookery, Patisserie & Hospitality students authentic industry experiences supervised by passionate teachers who have extensive experience in the hospitality industry.

We thought we'd do something special this year by making a difference. As the places for the dinner are limited, we asked for a small \$10 registration fee to subsidise the cost of the event and delegates consider contributing to the University's Foundation.

The Federation University Australia Foundation helps students with financial hardship during their studies. 100% of your donation over the cost of the dinner will go towards supporting scholarships that provide much needed financial aid. Donations above \$2 are tax deductible.

If you haven't already contributed and would like to (or would like to contribute more) you can do it using the following link:

<https://federation.edu.au/connect/foundation/donate>

SMB: Ballarat Old Gaol Tour

Meet at the gates of Building E, SMB campus where the "Tour Starts Here" sign will be at 5.15pm.

Federation University historian Dr David Waldron is behind a series of guided tours of the old Ballarat Gaol, now the site of the SMB Campus. Dr Waldron will be your guide on this tour.

Important: To maximise everyone's enjoyment, please refrain from talking during Dr Waldron's presentations.



IMPORTANT

These two events are only available to those who registered prior to arriving.

People's Choice Award

About the Award

During the conference, you have the opportunity to recognise the **best presentation and contribution to the Partner Conference**

We hope to encourage active participation leading to improvements of the Federation University Partner Model and our scholarship of teaching and learning.

You can vote on your favourite presentation by ranking a range of criteria in the online award ballot form. The presenter/s with the most votes will be awarded the People's Choice award for best presentation.

The winner will be announced at the closing event of the conference by the Dean, Global Professional School.

To cast your vote, use the link or QR code below.



Cheree Macdonald and Greta Murdoch - winners of 2023 People's Choice Award

2023 Awards

1st place

My Accent is my Superpower: International Student Employability

Cheree Macdonald - International Student Employability Coordinator, Global Professional School (GPS), Federation University and Greta Murdoch - International Student Employability Coordinator, Global Professional School (GPS), Federation University

2nd place

Project Based Learning

Nadil Sundarapperuma - Assistant Manager, Academic Services, IIBIT and Dr Naga Dasari, Lecturer, IIBIT

Honourable mention

Improving student experiences through innovative practice

Lucy Elliott - Academic Director, OES/Federation University Online, Sue Kokonis - Chief Academic Officer, OES/Federation University Online and Veronica Morin, Technology Innovation Manager - OES/Federation University Online

URL TO VOTE

<http://tinyurl.com/FederationPCA>

QR CODE TO VOTE



Your feedback matters

Why should you respond?

Every year we aim to make the conference better. We want engaging sessions, speakers, smooth logistics and, simply, a great experience for everyone.

Your feedback is invaluable in helping us achieve that!

The survey links and QR codes are available below, and we will email them to you after the conference has concluded.

Both surveys are anonymous and cannot be linked back to you.

Session Evaluation

This survey provides important feedback to our presenters. It gives them an opportunity to assess their performance, reflect on their presentations, and identify areas for improvement to better engage their future audiences.

For the best results, we recommend completing this survey straight after each session.

Overall Conference Evaluation

By responding to this survey you can have direct impact in shaping future conferences. You can help us enhance the relevance and overall quality of the conference. With your feedback, we can make this an event that always exceeds your expectations.

So you can respond with confidence, we recommend completing this survey after you have attended all the sessions and events that you registered for.

From previous years

"I would say 2023 Partner Conference is probably the best partner conference I attended so far. We made lot of new connections as well."

"Thank you and your team very much for organizing such a successful event! I look forward to the conference next year."

"Thanks for a wonderful conference, an amazing variety of presentations and a great opportunity to meet with colleagues from both the Partners and remote campuses. I thoroughly enjoyed myself."

SESSION EVALUATION

<http://tinyurl.com/FederationSessionEval>



OVERALL CONFERENCE EVALUATION

<http://tinyurl.com/FederationOverallEval>



Maps

About the venue

Originating in 1870, and formerly known as the School of Mines Ballarat, the SMB precinct encompasses the modern Ballarat Tech School, Flecknoe Building, Prospects Restaurant, Old Gaol and Technology Park.

The recently renovated Co-operative Centre for Excellence (building A) is in the heart of Ballarat's CBD, amongst Federation University's historical SMB campus. The centre features state-of-the-art audio visual and communication technology in flexible and modern spaces, making it the ideal venue for business meetings, functions or community events.

The centre offers a range of classrooms with flexible seating options in addition to breakout spaces, a design thinking room, a boardroom, focus group and observation rooms, recording pods, and meeting rooms over three levels. On-site tech support is also available to support your event.

The IBM Emerging Technologies Hub is part of the Central Ballarat Technology Park (building T) and is the first facility of its kind in the world, where university students can collaborate on real-world case studies for business clients utilising cutting-edge IBM methodologies. Located on Federation's SMB Campus, the facility was opened in 2023.



Maps

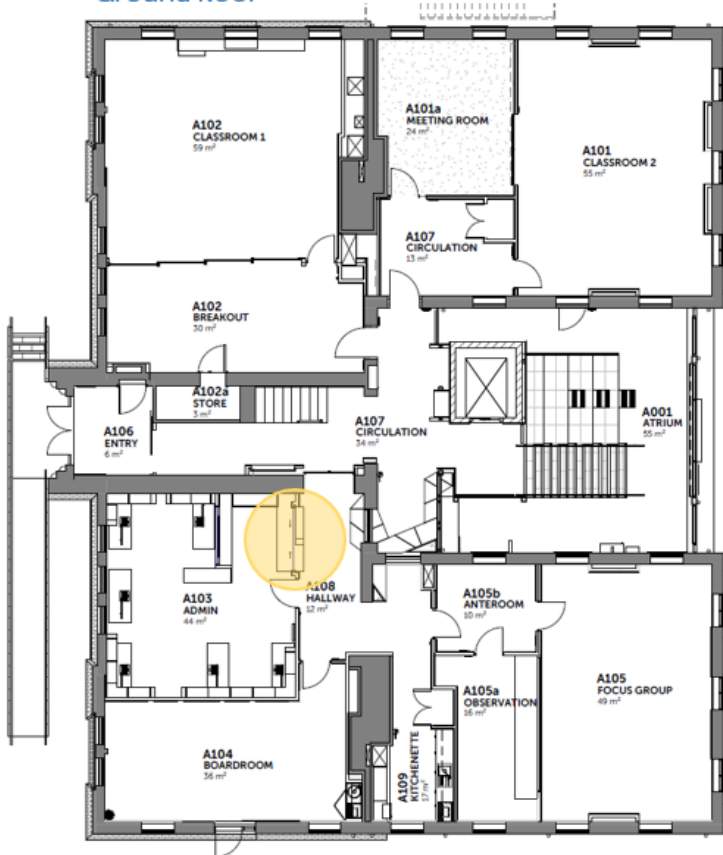
SMB Campus, Ballarat



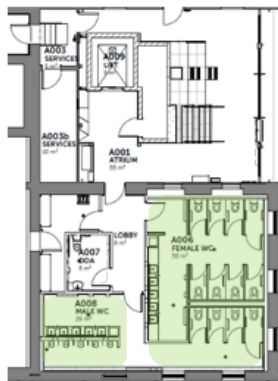
Maps

Building A

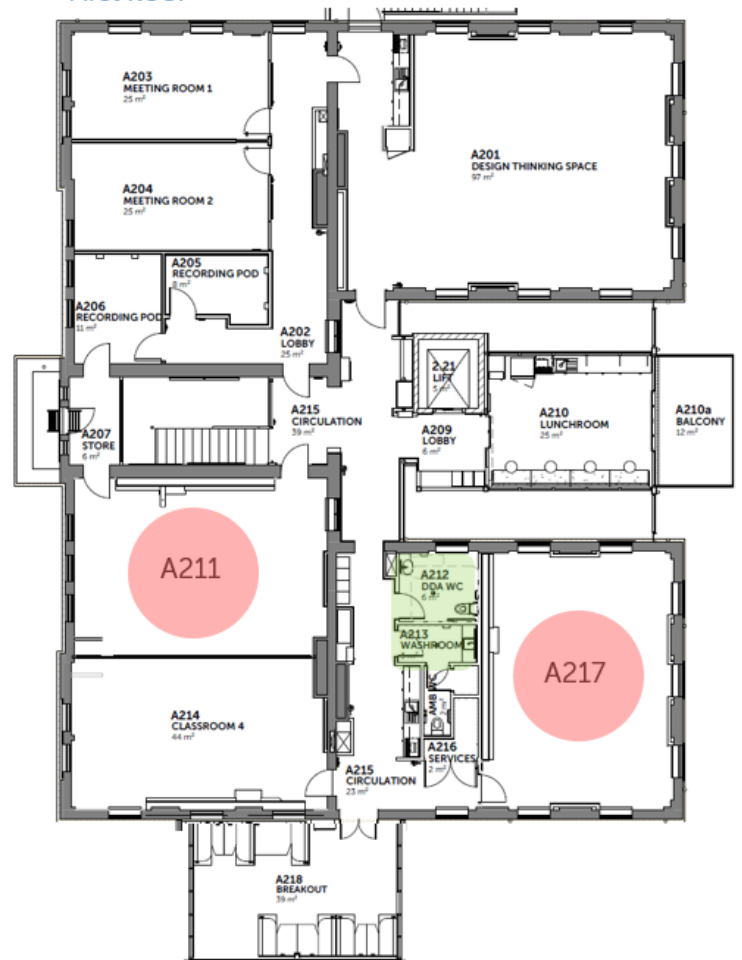
Ground floor



Lower ground floor



First floor



- Session rooms
- Registrations
- Toilets
- Breakout areas
- Meeting rooms (may be booked)

Timetable – Thursday 1 February 2024

Time	Program Details			
8.30am	Registration: Building T, SMB campus Technology Park Central, 106-110 Lydiard Street South, Ballarat			
9.00am	Welcome to Country Housekeeping (Rm: IBM Emerging Technologies Hub)	Associate Professor Jason Giri – Dean, Global Professional School Wadawurrung Traditional Owners Aboriginal Corporation Elder		
9.10am	Opening Address	Professor Duncan Bentley - Vice-Chancellor and President		
9.30am	Keynote (Rm: IBM Emerging Technologies Hub)			
	Global Strategy and Partners	Carolyn Chong – Deputy Vice-Chancellor (Global and Engagement)		
10.15am	Morning Tea			
10.35am	Plenary Session (Rm: IBM Emerging Technologies Hub)			
	What does the co-op model mean for curriculum?	Associate Professor Lara Wakeling – Director of Learning and Teaching, IISS		
11.20am	Break			
11.30am	Plenary Session (Rm: IBM Emerging Technologies Hub)			
	Digital transformation of the learner experience	Samantha Bartlett – Chief Learner Experience Officer (CLXO)		
12.10pm	Move between sessions			
12.20pm	Session A (Rm A217)		Session B (Rm A211)	
	Transforming student communications	Cindy Cash – Director, Retention, Innovation and Student Experience	Co-operation makes it happen: Co- operative education and third-party degree delivery partnerships	Associate Professor Jason Giri – Dean, Global Professional School
12.50pm	Lunch			
1.40pm	Session C (Rm A217)		Session D (Rm A211)	
	Navigating the student experience	Lydia Bou-Ghosn – HR Operations & PY Academic Manager, ATMC Monika Sharma, Career Development Centre Coordinator, ATMC	The need to inform academic integrity education	Sharon Reid – Discipline Leader in Science & Engineering, GPS, Dr Grant Meredith – Discipline Leader in IT, GPS Mengyao Li – Lecturer & Director of Student Affairs Office, Hebei University of Science and Technology (HeBUST)
2.10pm	Move between sessions			
2.20pm	Session E (Rm A217)		Session F (Rm A211)	
	Empowering student engagement and English proficiency: Insights from Federation University's Joint Information Engineering Institute in Hebei, China	Dr Grant Meredith – Discipline Leader in IT, GPS & Yunshan Chi – Executive of the Language Centre (HeBUST) and Lecturer for the Federation Joint Information Engineering Institute.	Integrating student needs and prospects into the curriculum	Emma Derainne – Program Coordinator, Federation Online
3.00pm	Move between sessions			
3.10pm	Session G (Rm A217)		Session H (Rm A211)	
	Enhancing engagement: Strategies for effective collaboration between Federation and HeBUST in China	Dr Mehdi Naseriparsa – Scholarly Teaching Fellow, IT, GPS Dr Naga Dasari – Scholarly Teaching Fellow, IT, GPS	Collaborative quality assurance practices with Bold Learning and Teaching Practice 3.0	Sara Warren – Learning Designer, BOLD Anthea Groessler – Learning Designer, Julian Laffey – Analyst Programmer
3.40pm	Afternoon Tea			

Time	Program Details	
4.00pm	Plenary Session (Rm: IBM Emerging Technologies Hub)	
	Student voices: Transforming education experiences in the 21st Century	MC: Dr Alan Labas – Senior Lecturer, Management, Global Professional School Panel of student representatives
5.00pm	Day 1 formal end	
5.15pm	Ballarat old Gaol Tour – Optional, RSVP essential	
6.00pm	Conference Dinner: Prospects Restaurant, J Building, SMB Campus. RSVP essential. Keynote speaker: Professor Duncan Bentley - Vice-Chancellor and President	

Timetable – Friday 2 February 2023

Time	Program Details	
8.30am	Registrations, Building A	
9.00am	Welcome / Housekeeping notes	
9.10am	Keynote (Rm: IBM Emerging Technologies Hub)	
	Research and research training opportunities in partnership with Federation	Professor Syed Islam – Associate Deputy Vice-Chancellor (Research and Innovation – Strategic Research), Professor Shane Thomas – Associate Deputy Vice-Chancellor (Research and Innovation), Professor Andrew Barton – Deputy Dean, Graduate Research School
10.10am	Move between sessions	
10.20am	Session I (Rm A217)	Session J (Rm A211)
	Student-led pop-up health checks improve student experience and community access to prevention screening	Nicole Coombs – Research Fellow, Collaborative Evaluation and Research Centre (CERC) Lauren Sewell – Project Manager, Gippsland Community Health organisations
		Discovering New Horizons: Your guide to the new Federation University pathways. Jason Rogers – Manager, Global Pathways
10.50am	Morning Tea	
11.10am	Session K (Rm A217)	Session L (Rm A211)
	Giving psychology away: Psychological Literacy in the real world	Justin Timora – Lecturer, Psychology Kieran Thorpe – Lecturer, Psychology
		Generative AI-Resistant Assessment Design Mr Nadil Sundarapperuma – Academic Manager, IIBIT Dr Naga Dasari - Scholarly Teaching Fellow, IT, GPS
11.40am	Move between sessions	
11.50am	Plenary Session (Rm: IBM Emerging Technologies Hub)	
	The impact and outcomes of partner quality assurance on the student experience	Professor Nina Fotinatos – Advisor to Provost (Special Projects) Associate Professor Jason Giri – Dean, Global Professional School
12.20am	Break	
12.30am	Plenary Session (Rm: IBM Emerging Technologies Hub)	
	Bridging academia and industry: The power of partnerships in co-operative Education	MC: Leigh Kennedy – Associate Deputy Vice-Chancellor, Engagement Panel members from industry and student placement representatives
1.30pm	Lunch: Prospects Restaurant	
	Closing notes/wrap up and award presentations – Associate Professor Jason Giri, Dean, Global Professional School	
2.30pm	Conference conclusion	

Conference sub-themes:

PLEASE NOTE: This program may be subject to change

Enhancing student experience	
Co-op university model	
Academic design, practice, and quality	

In detail – Plenary sessions and events

Keynote session – Thursday morning

Global Strategy and Partners

Carolyn Chong, Deputy Vice-Chancellor (Global and Engagement)

Ms Chong commenced at Federation University on 9 March 2021. She has held senior leadership roles across a range of portfolios at Swinburne University of Technology, Victoria University, and RMIT University over the past twenty years, including most recently Dean of Swinburne Global Education. Ms Chong is an expert in partnered delivery both internationally and domestically across several continents and has overseen the set-up and implementation of new campuses, most recently in Sydney and Vietnam. She has been Chair of Victorian TAFE International and has extensive experience in growing vocational training and industry partnerships, including Business to Business education. A strategic thinker, Ms Chong has built research and mobility partnerships across Europe and the Americas to complement significant success in New Colombo Plan funding for Asian partnerships. She brings expertise in building work placements and internships across higher education and vocational education. Ms Chong has worked closely with Federal, State, and local governments and regulatory authorities both in Australia and overseas, particularly across Asia.

Plenary Sessions – Thursday morning

What does the co-op model mean for curriculum?

Associate Professor Lara Wakeling, Director, Learning and Teaching, Institute of Innovation, Science and Sustainability

The Federation University Australia Co-operative Model is a unique approach that puts students at the heart of education and industry with ongoing connections to industry throughout their degree. This session will explore the implications of the Co-Operative (Co-Op) University Model on traditional curriculum structures. Discover how the Co-Op model challenges conventional approaches to education, fostering a symbiotic relationship between academia and industry. Lara will unravel the impact on students' learning experiences, workforce readiness, and the broader academic ecosystem.

Professor Wakeling is passionate about food and the science of food and is keen to share this with others. She has 15 years' experience in academia and a keen interest in learning and teaching, with a focus on enhancing the student experience. Her research interests include a focus on both learning and teaching and compositional analysis of food to monitor effects of various processing techniques.

Digital transformation of the learner experience

Ms Samantha Bartlett, Chief Learner Experience Officer (CLXO)

In an era defined by rapid technological advancements, this session promises to unravel the revolutionary impact of digital transformation on the landscape of higher education particularly at Federation University and harness the power of digital tools to redefine and elevate the student experience. Learn how the university is looking into innovations that can empower students, enrich content delivery, and foster a more engaging, collaborative, and personalized learning environment.

Ms Bartlett leads the Learner Experience portfolio, which includes marketing, student administration and registrar, health and wellbeing, and retention, and has a strong focus on our digital transformation, taking a learner-centred approach to all that we do. She has end-to-end responsibility for the journey of our learners from promotion to application, all the way to graduation. The CLXO is driving the implementation

In detail – Plenary sessions and events

of the learner experience in our co-operative education model - a learner experience that is high-quality, personalised and supports them throughout their time as a life-long learner with Federation.

Plenary Session – Thursday afternoon

Student voice panel: Student voices: Transforming education experiences in the 21st Century

Guided by our charismatic Master of Ceremonies, this interactive discussion will feature a dynamic group of university students who are at the forefront of shaping their own educational journeys. Join us for an engaging conversation where students candidly share their perspectives on how universities can evolve to meet the ever-changing needs of learners. From innovative teaching methods to the integration of technology in and out of the classroom, our panellists will explore the strategies that have enhanced their educational experiences and offer insights into what truly matters in the modern learning landscape.

MC: Alan Labas, Lecturer, Management, Global Professional School, Federation University

Federation student panellists:

- **Khushi Shah – Bachelor of Information Technology**
- **Nikita Fammartino – Bachelor of Psychological Science**
- **Emilee-Jo Mclean – Bachelor of Education (Primary)**
- **Liam Crocker – Bachelor of Civil Engineering (Honours), Chair of Student Senate & Representative for Mt Helen Campus (Higher Education)**

Previously, Dr Alan Labas was the Associate Dean (Engagement) in the Faculty of Business, Federation University Australia. He has also held the role of Director of Applied Degrees and has lectured in Business Communications, Marketing Communications and Project Management. Alan has held management positions in the advertising industry, manufacturing, and education. Alan's research interests are in Regional Australia, small business knowledge management and business advisor knowledge transference.

Khushi Shah recently graduated from Federation University with a degree in Information Technology, majoring in Business Information Systems. An international student who worked at various jobs within the university, which lead to her receiving the 'International Star' award at the FedAwards event. Having been a student, and having closely worked with students, Khushi believes she has a better understanding to assist others. Her dedication to studies and campus activities has equipped her with various useful skills. Khushi Shah enjoys listening to music and spending time with her family during her free time.

Nikita Fammartino is a mature-age undergraduate student who is in her final year of a Bachelor of Psychological Science at Federation University Australia. A mother of three, she decided to return to higher education to pursue a career shift from human resources to psychology. Nikita's dedication to her studies has earned her multiple commendations for outstanding academic results. With a strong interest in clinical psychology, Nikita is committed to continuing her education and post-graduation plans to complete an honours year followed by a master's degree.

Emilee-Jo Mclean began studying at Federation TAFE in 2021 as a Certificate IV Education Support student. She is currently in her second year of Bachelor of Education (Primary) at Federation University, maintaining high distinction grades. Emilee's motivation to be an advocate for compassionate and inclusive learning is a result of her own journey in primary schooling as a gifted student, experiencing vulnerability and trauma. Outside of academics, Emilee works with local historical tourism company, Eerie Tours, as a marketing and research assistant, and offers services voluntarily to multiple local community organisations including Freemasons Victoria (Ballarat), and Wise Self Defence classes for teenage girls.

In detail – Plenary sessions and events

Liam Crocker is the current student senate representative for the Ballarat Area. The Senate is a student body providing direct feedback on current policies as well as creating new and innovative ideas to improve the student experience. Since the beginning of last year Liam has been the chair of the Student Senate leading the student body to new heights. He has helped Senators turn into tomorrow's leaders by developing their skills and encouraging them to engage with the university and other professionals. Through the Senate, Liam continues to pave the way for proactive problem solving of both domestic and international issues.

Ballarat Old Gaol Tour

The secrets of Ballarat's dark criminal past will be uncovered

Dr David Waldron, Senior Lecturer, History / Deputy Director, Industry Engagement, Institute of Education, Arts and Community

Federation University historian David Waldron is behind a series of guided tours of the old Ballarat Gaol, now the site of the SMB Campus. The gaol's colourful history includes the daring escape of a notorious bushranger. This tour runs for about 45mins and is a perfect filler for those that want to remain on campus before the Conference dinner.

Dr David Waldron is a Senior Lecturer in history at Federation University Australia, with a research focus on folklore and community heritage, particularly the development of urban legends and popular folklore as a response to traumatic community experiences. David is the author of Sign of the Witch: Modernity and the Pagan Revival (Carolina Academic Press, 2008), Shock! The Black Dog of Bungay – a Case Study in Local Folklore (Hidden Press, 2010) and Snarls from the Tea-Tree: Victoria's Big Cat Folklore (Australian Scholarly Publishing, 2013). He is also editor/contributor to Goldfields and the Gothic: a Hidden Heritage and Folklore (Australian Scholarly Publishing, 2016) and Aradale: the Making of a Haunted Asylum (Australian Scholarly Publishing, 2020).

Conference Dinner

Prospects Restaurant

Keynote speaker: Professor Duncan Bentley, Vice Chancellor and President, Federation University

MC: Associate Professor Jason Giri, Dean, Global Professional School

Federation University's Vice-Chancellor and President believes a dual-sector regional university sits at the heart of its communities, playing a core role in their prosperity and growth. Throughout his career Professor Bentley has supported universities to grow through design thinking, digital innovation, deep community engagement and long-term global partnerships. He comes to Federation from a distinguished academic career at Swinburne University as Deputy Vice-Chancellor (Academic). There, he led the academic, international, online and Indigenous portfolios. He is known for his national leadership in lifelong learning so that everyone can develop the skills to thrive in a digital society, beginning in early childhood and continuing throughout life, inspired by curiosity, giving life to dreams. Previously at Victoria University he had oversight of vocational education, external engagement and international. He believes that the happiest and most successful organisations and communities are diverse and inclusive. Growing up on coffee plantations and game reserves in Africa, he champions adoption of technologies to support sustainability. Professor Bentley completed a Bachelor of Arts and Bachelor of Laws from the University of Cape Town. He went on to complete a Master of Laws from the University of London, Master of Laws (Corporate and Commercial) and PhD from Bond University.

In detail – Plenary sessions and events

Plenary Session – Friday morning

The impact and outcomes of partner quality assurance on the student experience

Professor Nina Fotinatos, Advisor to Provost (Special Projects)

Associate Professor Jason Giri, Dean, Global Professional School

The aim of the presentation is to provide a snapshot into 'partner quality assurance processes and outputs' as captured in the 2023 Federation University TEQSA submission. The presentation will highlight the following key areas:

- Importance of the current governance framework structures and supporting all partners
- Value of the Key Performance Indicator (KPI) Framework and regular reporting
- Highlight examples of Course level learning and teaching quality assurance options that can influence student engagement and success
- Highlight examples of Unit level learning and teaching quality assurance that can influence student engagement and success
- Highlight the importance of Scholarship of Learning and Teaching as part of ongoing continuous improvement cycle

The overall topic of the presentation is the importance of sustainable and productive partnerships towards positive student engagement and staff belonging under the dynamic and evolving Federation University quality assurance practices.

Professor Nina Fotinatos is currently the Advisor to Provost (Special Projects). Professor Fotinatos has extensive experience with leading centrally in areas of learning and teaching quality, policy and quality assurance. Professor Fotinatos has extensive experience with implementing university-wide initiatives and the development of plans and frameworks. In addition, Professor Fotinatos is the current Chair of the University Learning and Teaching Quality Committee and responsible for developing many strategic and operation processes supporting innovative teaching practice. Professor Fotinatos has 10 years of senior leadership experience in learning and teaching, particularly in the areas of academic career development and overall student experience.

Associate Professor Jason Giri is currently the Dean, Global Professional School at Federation University. Jason has previously held roles as Acting Pro Vice-Chancellor; International, Academic Director, International Education; Dean of the School of Science, Engineering, and IT; Head of the School of Engineering and Information Technology and Deputy Dean, Science and Mathematics. Jason has over 20 years of academic and research experience in the areas of mathematical optimization and tertiary education. Jason was awarded a national Citation for Contribution to Student Learning in 2007.

Plenary Sessions – Friday afternoon

Bridging academia and industry: The power of partnerships in co-operative education

MC: Leigh Kennedy, Associate Deputy Vice-Chancellor, Engagement

Industry representative panellists:

- **Pearl Myers, Associate Partner, Client Innovation Centre, Ballarat – IBM**
- **Alisha Bedggood, General Manager People, Culture and Safety – Central Highlands Water**
- **Clare Harper, Senior Manager, Student Programs and Study Melbourne Hub – Global Victoria**
- **Ryan Ross, student with placement experience in Bachelor of Commerce (Economics and Finance)**

In detail – Plenary sessions and events

Join us as we explore the dynamic landscape of co-operative education and the invaluable role that industry partnerships play in shaping the future workforce. Through a dynamic exchange of ideas, panellists will delve into the mutual benefits, challenges, and innovative practices that define successful partnerships between higher education institutions and the business world as well as the symbiotic relationship that produces graduates who are ready to make meaningful contributions to their chosen fields from day one.

An executive with over 20 years of international experience spanning five continents, Leigh is acknowledged for her proficiency in engagement, strategy & research, consulting, and communications. She has previously worked with global companies including Deloitte Touche Tohmatsu, Accenture, and Standard Chartered Bank. Upon returning to Australia, Leigh was the Gippsland Regional Director at Regional Development Victoria before joining Federation University in March 2019 as Head of Campus, Gippsland. In late 2022 Leigh began her current role, Associate Deputy Vice-Chancellor, Engagement, broadening her focus to all campuses and the regions they service, implementing an Engagement Framework to develop and maintain authentic industry connections integral to transitioning Federation University to a cooperative model.

Pearl has worked for IBM since 2005 and during this time has undertaken various roles including service delivery management for some of IBM's large government, airline and retail clients as well as establishing a project management capability to support IBM Consulting projects across A/NZ. She is a strong advocate for women in technology and for many years has led the IBM Girls in Tech program, aimed at encouraging young girls in secondary school to consider education and careers in the non-traditional fields of engineering, science and technology. She has been a keynote speaker at various events, presenting on such topics as 'Leadership in a Global Environment' and 'Leading Teams Across Diverse Cultures' and in 2022 was nominated by IBM and was a winner in 'Women Leading Tech Awards'. Pearl is currently an IBM Associate Partner and Leads the IBM Client Innovation Centre located in Technology Park in Mount Helen and is very proud of the highly valued relationship that IBM has held with Federation University for 27 years.

Alisha joined Central Highlands Water in 2023 from the Department of Agriculture, Fisheries and Forestry where she was a senior leader of a national team in the People Division, focusing on strategy and governance within the division and across the department. Alisha contributes strong human resources, safety, and water sector knowledge, building on her previous role here at CHW as Manager People, Safety & Wellbeing. Alisha is an experienced senior leader who shares her commitment and a positive outcome focus as our General Manager People Culture & Safety. Qualifications: Grad. Dip. Occupational Hazard Management.

Clare Harper joined the Department of Jobs, Skills, Industry, and Regions in 2021, an accomplished Senior Manager in Student Programs, who brings a wealth of expertise to her role. With a passion for fostering educational opportunities, Clare has dedicated her career to enhancing the student experience. Her strategic leadership has significantly contributed to the success of various programs aimed at supporting students. As a dynamic professional, her dedication to shaping the future of education is coupled with her extensive experience having previously worked for Monash College, The University of Melbourne and University of Nottingham.

Ryan Ross recently completed his bachelor's degree in commerce (Economics and Finance) starting back in 2021. During his degree, he was interned at IBM's Ballarat Client Innovation Centre as part of Project Management Office (PMO) Team (August 2021 – Current) through a partnership with Federation University. This opportunity has landed him in a graduate project manager role at IBM starting in April 2024.

In detail - Concurrent sessions

Session A

Transforming student communications

Cindy Cash, Director, Retention, Innovation and Student Experience

How Federation University transformed the student experience through personalised communications that anticipated student needs and streamlined access to critical information.

Students must navigate an extraordinary amount of information from all different areas of the university. To deliver on their vision of ensuring that students receive information that is timely, relevant and personalised to their needs required a detailed understanding of student needs at all stages of their journey, an uplift in capability and a staged approach to design and delivery. Federation University will share how they approached this significant program, the key lessons, and insights into how this changed the student experience.

Cindy Cash is the Director of Retention, Innovation and Student Experience at Federation University. A passionate advocate for the customer, a self-confessed data nerd and strategic leader with expertise in customer experience, marketing strategy, customer insights and brand, she has an extensive track record of success in leading customer focussed transformational change in complex corporate environments, including implementing one of Australia's largest voice of customer programs, implementing enterprise wide culture change to align purpose, values and experience, and developing the strategy and long term roadmap to transform product and service experience.

Session B

Co-operation makes it happen: Co-operative education and third-party degree delivery partnerships

Associate Professor Jason Giri, Dean, Global Professional School

Shaping the Future: Co-operative Education and Third-Party Degree Delivery Partnerships.

Join us as we uncover the impact of co-operative education on the landscape of degree delivery at our education partners. The presentation will explore the role of third-party partners in the co-operative education model, enhancing student experiences and providing them with a seamless bridge between academic theory and real-world application.

Associate Professor Jason Giri is currently the Dean, Global Professional School at Federation University. Jason has previously held roles as Acting Pro Vice-Chancellor; International, Academic Director, International Education; Dean of the School of Science, Engineering, and IT; Head of the School of Engineering and Information Technology and Deputy Dean, Science and Mathematics. Jason has over 20 years of academic experience and research in the areas of mathematical optimization and tertiary education. Jason was awarded a national Citation for Contribution to Student Learning in 2007.

Session C

Navigating the student experience

Lydia Bou-Ghosn, HR Operations & PY Academic Manager, ATMC

Monika Sharma, Career Development Centre Coordinator, ATMC

Welcome to ATMC Edge. We are excited to reveal how we have harnessed the incredible potential of our students to bridge the gap between university staff and students, creating an environment where the

In detail – Concurrent sessions

student journey is not just navigated but celebrated.

Lydia has been working with international students in the education sector for over 16 years. She has a background in ELICOS, the Professional Years Program and Higher Education student engagement.

Monika has always believed that everyone has the potential in becoming successful in their career – that's why she chose to become a Career Consultant. With 14 years of experience in higher education, VET sector and career counselling, Monika is always helping people boost their confidence and develop their skills. Her holistic approach brings clarity, direction, and positive support for her clients.

Session D

The need to inform academic integrity education

Sharon Reid, Discipline Leader in Science & Engineering, GPS

Dr Grant Meredith, Discipline Leader in IT, GPS

Mengyao Li, Lecturer & Director of Student Affairs Office, Hebei University of Science and Technology (HeBUST)

International students face multiple challenges during their time studying with Federation University, one of those being understanding the requirements around academic integrity. Cultural expectations of academic integrity can vary, and this can lead to incorrect assumptions of what is considered academic misconduct in both the student and partner staff bodies.

Ensuring students are fully aware of the “rules” they must follow is the first step to reducing academic misconduct incidences.

To explore the current level of understanding at one of our Chinese partner locations, a survey has been undertaken of IT students and staff in the Federation University Information Engineering Institute, Hebei, China. The survey results will demonstrate where misunderstandings are occurring and inform the development of educative resources for both students and staff, where required.

This presentation will outline the methods and findings from this study which employed an online survey and series of short case studies.

Sharon Reid is the Discipline Lead of Science & Engineering and is also the Academic Integrity Officer for the Global Professional School. She teaches into the life science courses in Australia and has been teaching Environmental Science in China since 2017.

Grant Meredith is the Discipline Lead of Information Technology for the Global Professional School and leads the teaching team at the Federation University Information Engineering Institute, Hebei, China. He has been teaching IT in China since 2012.

Mengyao Li is a Lecturer, Secretary of Youth League Committee, and the Director of Student Affairs Office at the Federation University Information Engineering Institute.

In detail - Concurrent sessions

Session E

Empowering student engagement and English proficiency: Insights from Federation University's Joint Information Engineering Institute in Hebei, China

Dr Grant Meredith, Discipline Leader in IT, GPS

Yunshan Chi, Executive of the Language Centre (HeBUST) and Lecturer for the Federation Joint Information Engineering Institute

The lifting of COVID-19 travel restrictions has given Federation University's Joint Information Engineering Institute in Hebei, China, a unique and long-awaited opportunity to engage more fruitfully with our many students. Before COVID-19, all engagement with and teaching by our academic team had been conducted via Microsoft Teams (MS Teams). Although student success was evident, satisfaction levels from both students and teaching staff were impacted. The lack of engagement also affected English language proficiency and skills.

To encourage more engagement and improve English confidence levels for students, an active and evolving program was initiated in mid-2023. The structure and results of this program will be shared in this presentation.

Grant is the Discipline Lead for IT for the Global Professional School. He has taught in China for the University since 2012 and currently leads the teaching team at the Fed Uni Joint Information Engineering Institute in Hebei, China. Grant was the inaugural Associate Dean of Student Retention & Success for the then Faculty of Science & Technology.

Yunshan is the Executive of the Language Center and Lecturer for the FedUni Joint Information Engineering Institute.

Session F

Integrating student needs and prospects into the curriculum

Emma Derainne, Program Coordinator, Federation University Online

At FedOnline, we are integrating an employability section into Module 0 of each Food and Nutrition unit to increase student opportunity to create a portfolio of graduate programs; support understandings of where the degree can lead to in terms of career; and show them the skills (e.g., addressing criteria) that can help them get there. Each module will have an Expert discuss their career journey inspiring students on the many paths to success.

Emma Derainne is the Program Coordinator for Federation University Online in Early Childhood Education, and Food and Nutrition Sciences. Emma has an Associate Fellowship (Indigenous) from the Queensland Academy of Learning and Teaching and extended her knowledge of Aboriginal, Torres Strait and Global Indigenous perspectives to a presentation of Digital Yarning Circles at the 2022 STARS Conference. As a bi-cultural and bilingual First Generation Graduate herself, Emma has a keen interest in advocating for student voice within cultural-power dynamics within online tertiary education classrooms. Authenticity prompts engagement through humour, grit, critical-thinking, collaboration, and creativity.

In detail - Concurrent sessions

Session G

Enhancing engagement: Strategies for effective collaboration between Federation and HeBUST in China

Dr Mehdi Naseriparsa, Scholarly Teaching Fellow, IT, GPS

Dr Naga Dasari, Scholarly Teaching Fellow, IT, GPS

Federation has established a collaborative partnership with Hebei University of Science and Technology located in Shijiazhuang, China. We conduct a 90-minute practice session every week and an additional 90-minute session on alternate weeks for a cohort of 50 students for each unit, assisted by a Teaching Assistant (TA). However, we encounter challenges such as a large cohort size, language barriers, low engagement due to cultural factors, limited educational resources and TAs lacking unit knowledge.

In response, we have implemented effective pedagogical strategies. These include comprehensive demonstrations of lab tasks, active involvement of TAs and student representatives, and promotion of teamwork. Additionally, we leverage technology by providing live captions during face-to-face instruction to enhance students' comprehension. Furthermore, we record the sessions, allowing students to review the material at their own pace.

These innovative practices enhance engagement among Chinese students and improve their learning experience, addressing the challenges posed by the unique dynamics of our international collaboration.

Mehdi Naseriparsa is a Scholarly Teaching Fellow, Information Technology at Federation University, researcher in artificial intelligence, holding a PhD in ICT (Swinburne University of Technology), and a Graduate Certificate in Education (Tertiary Education) from Federation University, with extensive experience in research, teaching, course coordination and moderation, marking, assessments and course development in IT. He has extensive teaching experience with over 3,000 undergraduate and postgraduate IT students in programming, Data Analytics, Business Analytics, Machine Learning/ Deep Learning platforms, and database systems, and has published in prestigious AI, data science and machine learning venues.

Dr. Naga Dasari has obtained a PhD from University of South Australia in 2016 in Computational Neuroscience. He is Currently working as a Scholarly Teaching Fellow at Federation University, Australia. Previously he worked as a Lecturer and Academic Coordinator at IIBIT, Adelaide for 7 years (a partner of Federation University). He worked in multiple universities in India teaching undergraduate and post graduate students in Computer Science & Engineering and Information Technology. Dr. Naga has authored/co-authored 15 research articles in prestigious conferences and journals. He participated in the 2023 Partner Conference and won second prize along with Nadil (IIBIT, Adelaide).

Session H

Collaborative quality assurance practices with Bold Learning and Teaching Practice 3.0

Sara Warren, Learning Designer, BOLD

Anthea Groessler, Learning Designer

Julian Laffey, Analyst Programmer

The BOLD Learning and Teaching Practices (BLTP) 3.0 not only guide design, showcase high-quality work, and provide evidence of quality assurance but can also be utilised by senior leadership to demonstrate longitudinal improvement across units, courses, and disciplines. This tool delivers evidence to external agencies and government departments.

In detail - Concurrent sessions

The BLTP 3.0 provides clear guidelines around standards, practices and expectations for online learning and teaching, as applicable to the university's various delivery and study modes. Presented as an online educative checklist, the BLTP allows staff to inform, evaluate and reflect on their current learning and teaching practices, address identified needs and showcase best practices in learning and teaching leadership.

Sara Warren is a highly skilled Senior Learning Designer at Federation University, possessing both a Bachelor's, master's degree and progressing towards a PhD in Education, as well as over two decades of teaching experience. She offers invaluable guidance to academic staff teaching undergraduate and postgraduate courses, devising strategies that facilitate quality assurance, improve academic proficiency, promote student engagement, and achieve desired learning outcomes. Sara works collaboratively with diverse cohorts, portfolios, and leadership within the university to ensure the most effective pedagogical approaches are employed in learning and teaching. Sara has presented at numerous conferences with papers at national and international levels.

Anthea has 20 years' experience as a Learning Designer in both tertiary and VET sectors and holds a Master of Education (Education Technology major). She supports academic staff to develop their capacity in pedagogy, technology, and design to enhance student's learning experiences. She has won several awards such as the VC Award for Excellence Federation University, 2022; and, Ascilite Awards, 2014 and 2004. Anthea has been invited to present at various conferences including HETL, Aberdeen 2023; ICDP Delhi, 2019; XX Virtual Educa Argentina, 2018; 2nd EuroSoTL Conference 2017, Sweden and Ascilite, Auckland, 2009 and has several publications in areas of Technology Enhanced Assessment, the Flipped Classroom, and the Connected Classroom.

Julian Laffey, Analyst Programmer, is a highly experienced software developer with over 25 years of IT experience in various fields, including education, health, manufacturing, and transport. He holds a Bachelor of Information Technology (Software Engineering) with Distinction and currently specialises in developing, building, and maintaining two bespoke in-house applications at Federation University. He has a particular interest in code quality, security, usability, and functional programming.

Session I

Student-led pop-up health checks improve student experience and community access to prevention screening

Nicole Coombs, Research Fellow, Collaborative Evaluation and Research Group (CERC)

Lauren Sewell, Project Manager, Gippsland Community Health organisations

Federation nursing student experiences of primary health care and health promotion have been enhanced over the past few years through successful collaboration with local industry partnerships. The reduced number of clinical placement hours included in the Australian nursing curriculum means students lack exposure to primary healthcare experiences during their study and hence, it is often underappreciated in nursing practice. Several partnership projects conducted in Gippsland have provided scope for students to volunteer in free student-led pop-up health check clinics, where clinical and communication skills are practiced and supervised outside of the clinical laboratory. The pop-up clinics have operated at shopping centres, Mens Sheds, and large farming field day events. Evaluation of the clinics have not only demonstrated improved access to preventative health education and screening for low socioeconomic populations in the area but has improved student confidence, skills, and appreciation for primary healthcare and health promotion within nursing.

In detail - Concurrent sessions

Nicole Coombs has been a Federation University nursing academic since 2015. Nicole previously practiced as an emergency nurse, and now passionately wishes to close the gap between acute and primary healthcare. She is an award winning academic, recognised for her teaching and research in the public health and health promotion area. Both her Master of Nursing and PhD research has been in patient education, and her publications include work in the areas of public health and nurse education. Leading student-led health check clinics in local communities, Nicole is also establishing an additional reputation as a collaborative partner in community health.

Lauren Sewell has a Bachelor of Health Sciences with Honours in Nutrition and has worked in the health promotion field over the past six years. Having a range of experience in planning, delivering, and evaluating health promotion programs, Lauren's work has been focussed in the Latrobe Valley and has been delivered in partnership with various local community organisations, including Federation University. With her strong passion for community designed and led programs and belief in place-based initiatives, Lauren focusses on working within her community for positive health outcomes, connecting with community sports and various networks.

Session J

Discovering New Horizons: Your Guide to the New Federation University Pathways

Jason Rogers, Manager, Global Pathways

Embark on a journey to explore the new Federation University Pathways. In this session, we will delve into the dynamics of our new pathways, and the various ways they can enrich academic offerings and offer more entry points to Federation courses. Explore the diverse range of pathway programs, including English for Academic Purpose, Foundation courses, and Diploma pathways, and understand how they can complement and expand existing academic offerings. These pathways can assist to attract a broader spectrum of students, improving access to university education and enhancing student success.

Jason is manager of the Global Pathways team at Federation University. Jason has extensive experience working in Higher Education and Vocational Education pathways that spans 25 years. He has a master's in business management studies from Waikato University, New Zealand, and is currently completing a PhD through Griffith University, Australia. Jason led programs in the PTE sector in New Zealand, before coming to Australia in 2012, and leading Vocational Colleges in Brisbane, Melbourne, Adelaide, Tasmania, and Perth. Before coming to Federation University in 2021, he worked at Swinburne University as the Associate Director of Pathways, helping liaise between Swinburne University and Swinburne College. Jason believes that pathways allow everyone the opportunity to learn and there are no barriers to education, with these programs.

Session K

Giving psychology away: Psychological Literacy in the real world

Justin Timora, Lecturer, Psychology

Kieran Thorpe, Lecturer, Psychology

Psychological Literacy is the adaptive capacity to apply psychological science to achieve personal and societal needs and is an imperative outcome of a three-year undergraduate psychology degree. Taking authentic assessment to another level, and incorporating the co-operative principles, the undergraduate Psychology team have developed a real-world consultancy course, where final-year Psychology students apply their skills to answer the needs of a community organisation. This cooperative, agile unit has resulted in some pleasant

In detail - Concurrent sessions

surprises. The process of development, key take-aways, and questions arising will be discussed.

Kieran Thorpe is an Academic Advisor in the discipline of Psychology, based at Mt Helen. Kieran has taught in a range of courses across the Psychology curriculum and is a member of the Neurodiversity Inclusion and Success Project. Kieran was a key member of the development of the Careers in Psychology program.

Justin Timora is an Academic Advisor in the discipline of Psychology, based at Berwick. Justin has developed and redeveloped a range of courses across the Psychology program, including developing a Workplace Psychology unit. Justin has a focus on student support and the transition to university.

Justin and Kieran received Vice Chancellors Certificate of Commendation as part of the Academic Advisors team in 2021.

Session L

Generative AI-Resistant Assessment Design

Mr Nadil Sundarapperuma – Academic Manager, IIBIT

Dr Naga Dasari - Scholarly Teaching Fellow, IT, GPS

Generative AI tools, including ChatGPT and Bard, produce text, code, and creative content that can be nearly identical to human creations, posing challenges for educators. However, educators can employ effective strategies to create assessments resistant to these tools. By crafting specific prompts, structuring assignments with scaffolding, and integrating metacognitive elements, assessments can compel students to genuinely demonstrate their knowledge and skills. Our approach utilized scaffolded assignments, ensuring assessments consisted of multiple stages, requiring students to possess essential knowledge for problem-solving. Consequently, students cannot rely on AI tools without acquiring the necessary knowledge and skills. Additionally, we employed eRespondus software for final exams, addressing issues related to online exam integrity and ensuring a secure testing environment. This presentation shares our experience in assessment design post the introduction of generative AI tools like ChatGPT and Bard, highlighting methodologies adopted to maintain assessment integrity apart from eRespondus methodology suitability for the final exam.

Nadil is the academic manager at International Institute of Business and Information Technology (IIBIT) Adelaide Campus. Nadil has more than 18 years of teaching experience in both vocational and higher education sectors and worked in number of educational institutes in Australia, Vietnam, Malaysia, and Sri Lanka. Nadil has taught range of programming and project related courses at the Federation University Since 2005. He has also involved in developing curriculum for number of vocational and higher education programs including unit of competency design for ICT National Training Package.

Dr Naga Dasari has obtained PhD from University of South Australia in 2016 in Computational Neuroscience. He is Currently working as a Scholarly Teaching Fellow, Federation University, Australia. Previously he worked as a Lecturer and Academic Coordinator at IIBIT, Adelaide for 7 years (a partner of Federation University). He worked in multiple universities in India teaching undergraduate and post graduate students in Computer Science & Engineering and Information Technology. Dr. Naga has authored/co-authored 15 research articles in prestigious conferences and journals. He participated in 2023 partner conference and won second prize along with Nadil (IIBIT, Adelaide).

2024 Partner Conference Committees

Programming Committee

Vanessa Brady – Manager, Global Professional Services and Partner Conference Event Coordinator (Chair)

Alan Labas – Senior Lecturer, Management

Filip Janda – Project Manager, International Growth

Fionna McRae – Lecturer, English for Academic Purposes

Grant Meredith – Discipline Leader in Information Technology

With special thanks to:

Carolyn Chong – Deputy Vice-Chancellor (Global and Engagement) for allowing us to run ideas past her.

Logistics Committee

Vanessa Brady – Manager, Global Professional Services and Partner Conference Event Coordinator (Chair)

Andrew Sutherland – Coordinator, International Conversion

Filip Janda – Project Manager, International Growth

Fionna McRae – Lecturer, English for Academic Purposes

Helen Machin – Manager, Global Strategic Projects

Hiba Abdulsattar – Lecturer, English for Academic Purposes

Judi Lynch – Coordinator, Partner Liaison

Kellie Davis – Partner Liaison Officer

Leigh Smith – Administration Officer, International Admissions

Leigh Stephenson – Administration Officer

Leyla Aliyeva – Coordinator, International Admissions

Michael Tao – Partner Liaison Officer

Nicola Somers – International Admissions Officer

Nicole Oliver – Partner Liaison Officer

Olivia Chen – Administration Officer, International Conversion

Sally-Lee Murray – Administrative Officer, Credits

Sharalyn Rozanski – Partner Liaison Officer

Soon Tie – Partner Liaison Officer

Trang Nguyen – Partner Liaison Officer

Conference sponsors

We would like to thank our sponsors for their invaluable support and help. You all have been able to enjoy their gifts in your showcase bag.

Visit Ballarat

Are you planning a getaway in Ballarat? This is your starting point for everything you need to know before you hit the road.

INVEST IN: BALLARAT

Central Highlands Water

A regional water corporation providing drinking water, sewerage, trade waste and recycled water services to customers throughout the Central Highlands region of Victoria.



Mars Wrigley

The world's leading manufacturer of chocolate, chewing gum, mints and fruity confections, who have been manufacturing in Ballarat, Victoria for over 40 years.

Mars Wrigley

Ferndale Foods Australia

A family-owned, innovative Ballarat business, demonstrating sustained business success. Ferndale's brands provide convenient enjoyment for millions of consumers throughout Australia and around the world.

